



Reet London-Bilanchone



Reet London- Bilanchone

Collected Works
2002- Present



Reet London-Bianchone



Reet London- Bianchone

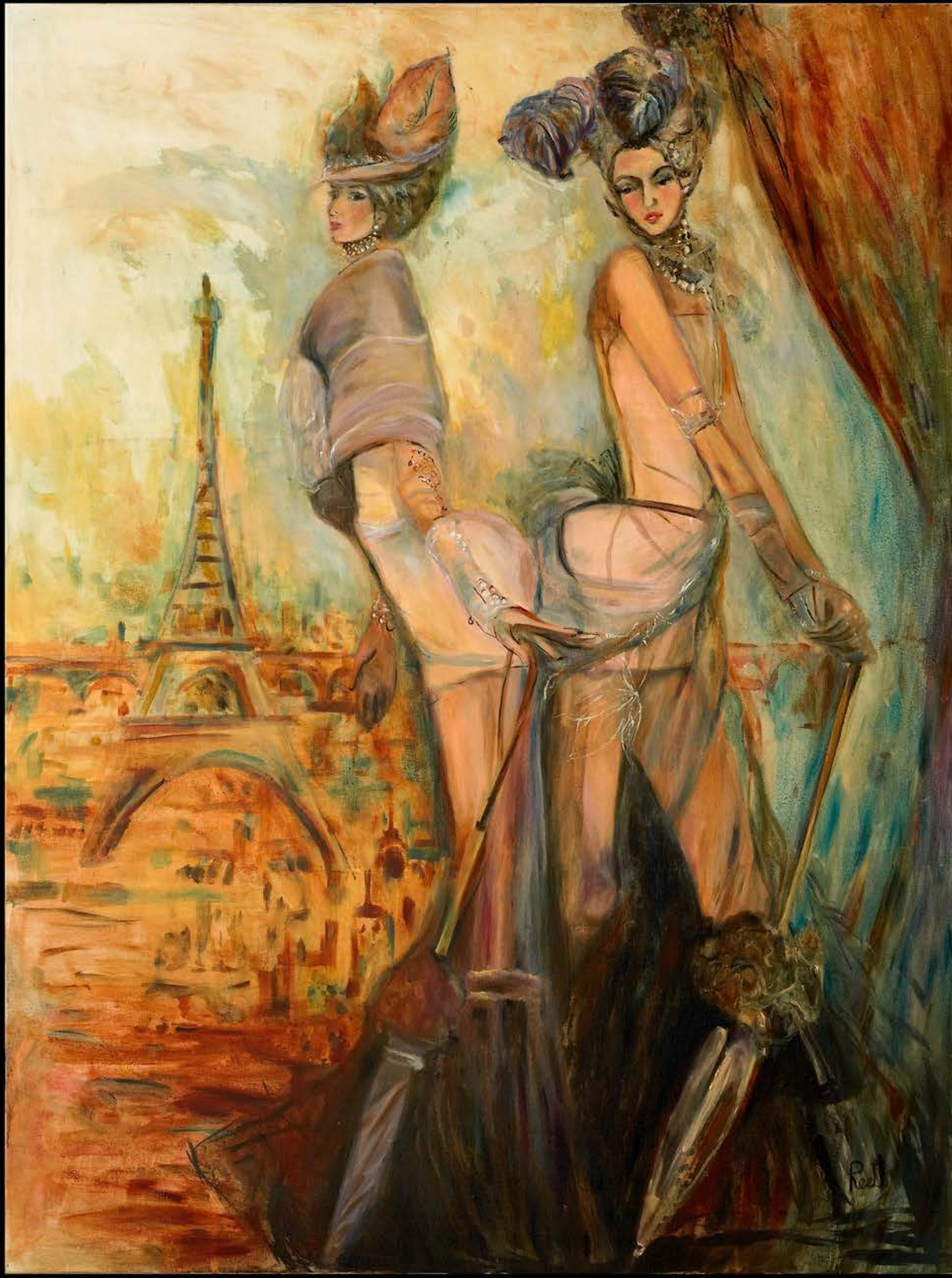
Collected Works
2002- Present

Reet London-Bilanchone

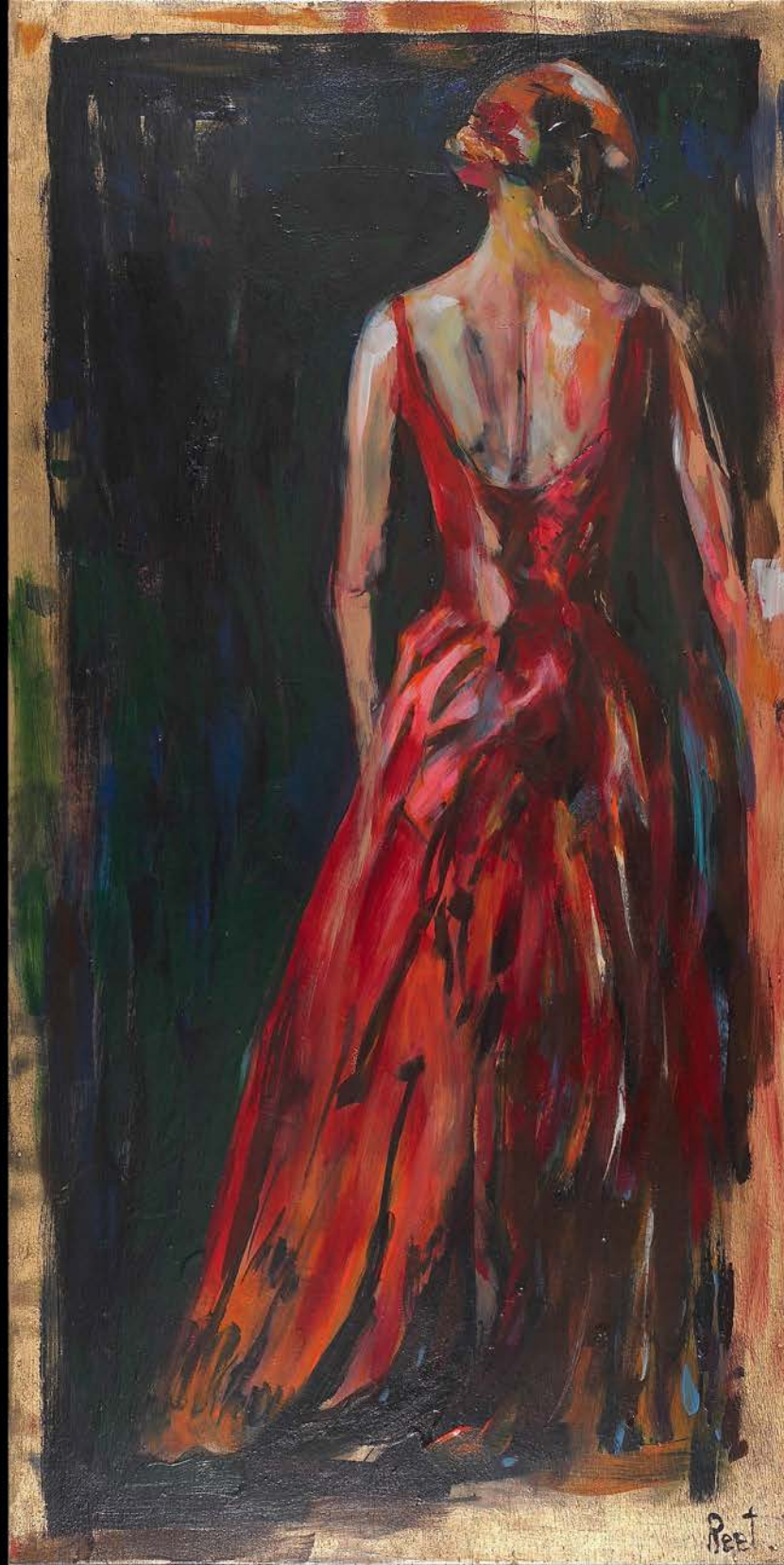
Energy runs through the works of Reet (pronounced Rhett) London, be it graceful flowing lines undulating over swirling fields of color creating an image out of the abstract field, or the brush strokes and color choices that make up a simple palm tree.

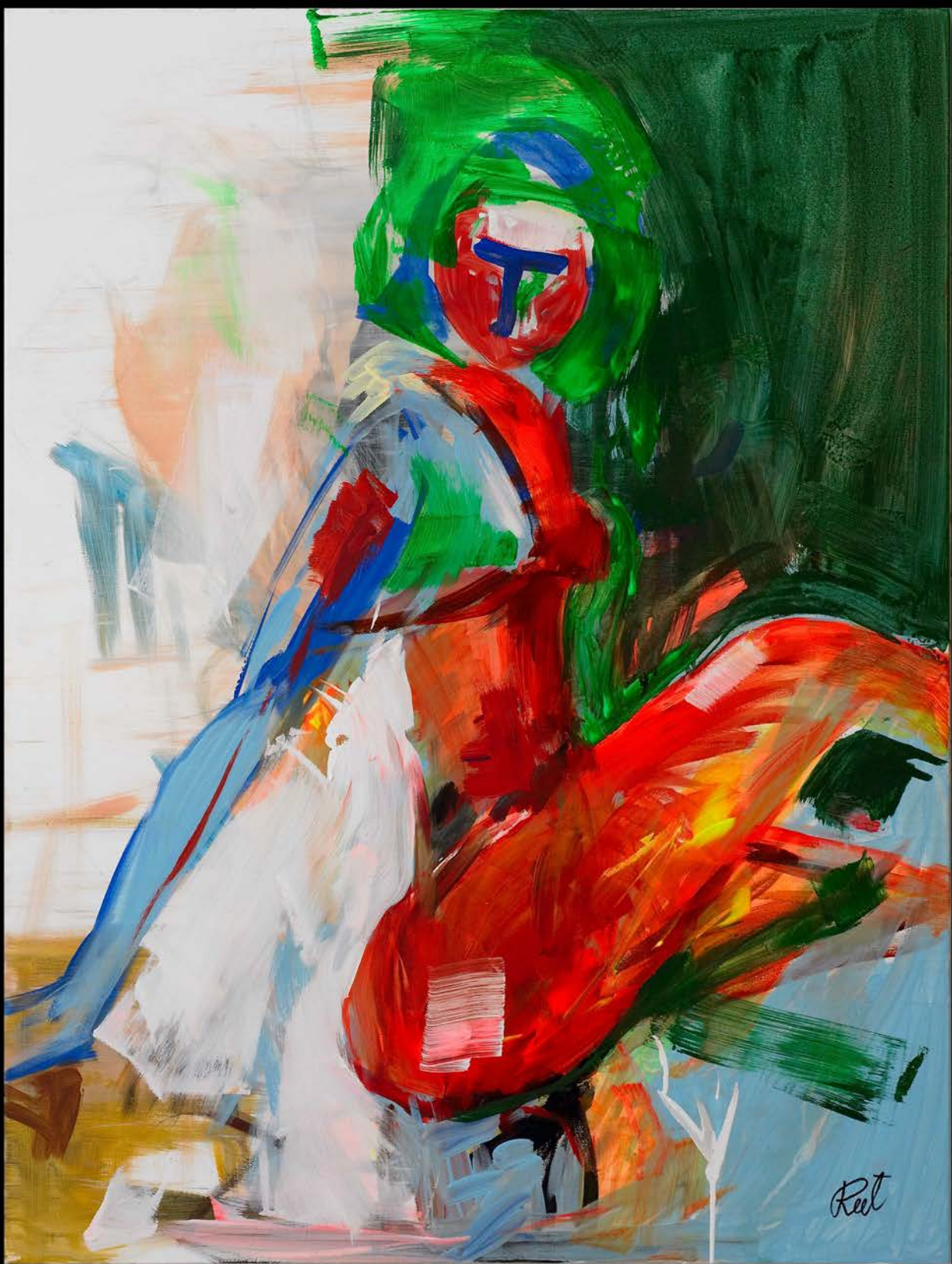
The mundane becomes charged with a sense of the unique and the personal becomes spiritual. Working with a color palette of full rich hues Reet's paintings recalls the works of past masters from the beginning of the last century, brimming with passion and sense of the divine within each object.

With a strong background in art and its techniques Reet is able to blend seamlessly many different styles, and disciplines. This ability mingled with her unique European sensibilities and vision combine within her work, forming a new language composed of texture color and line.

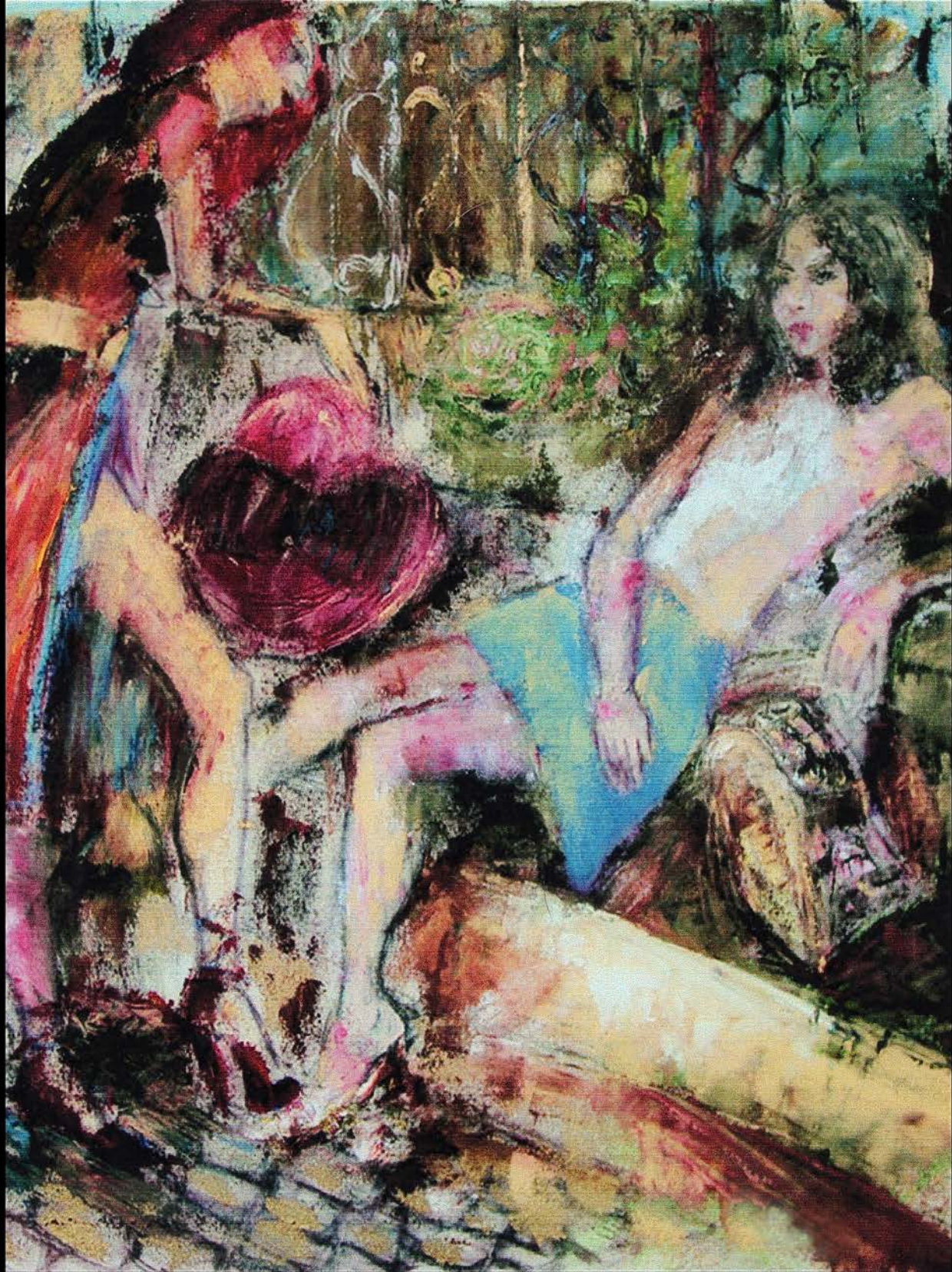








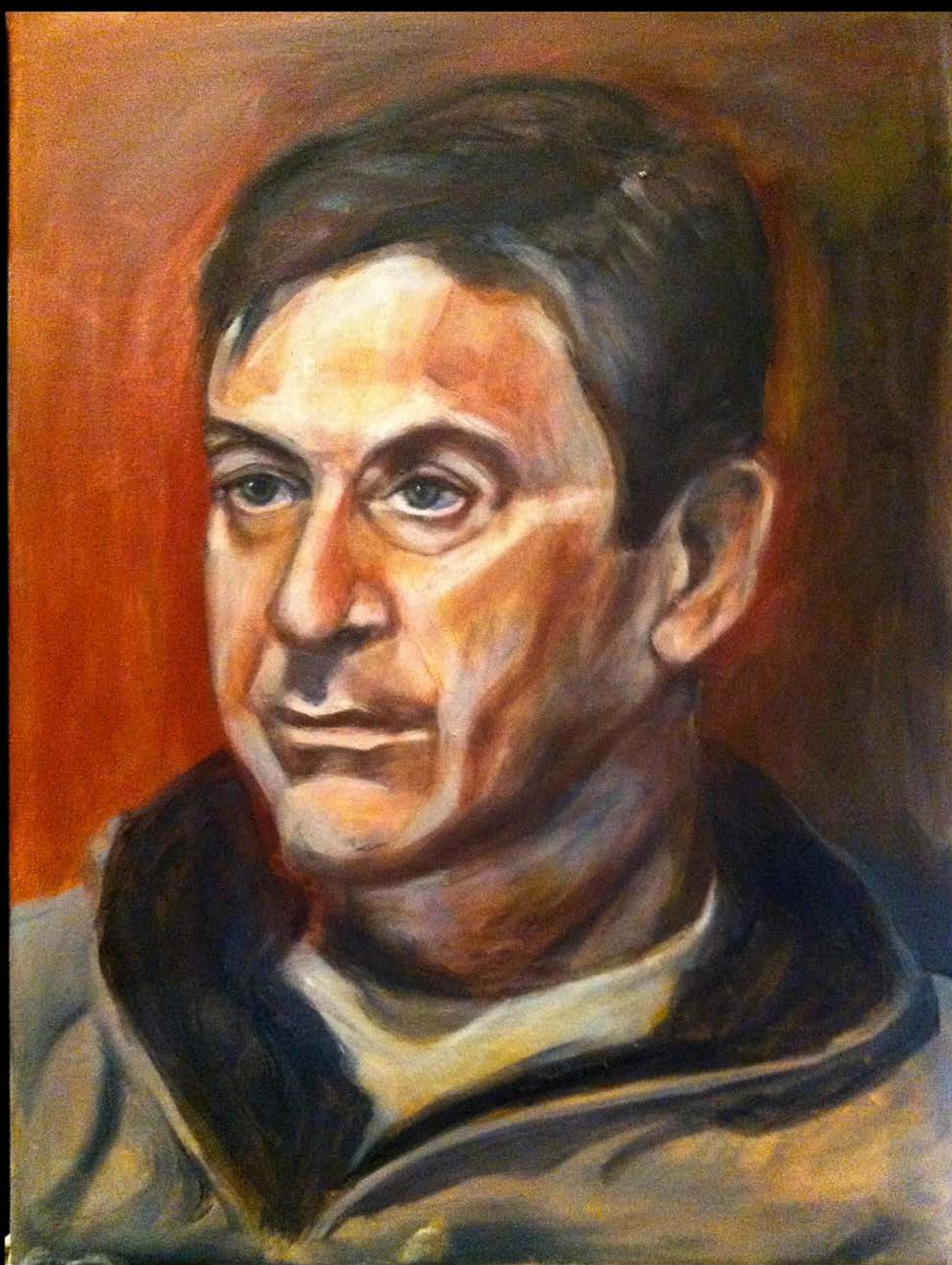


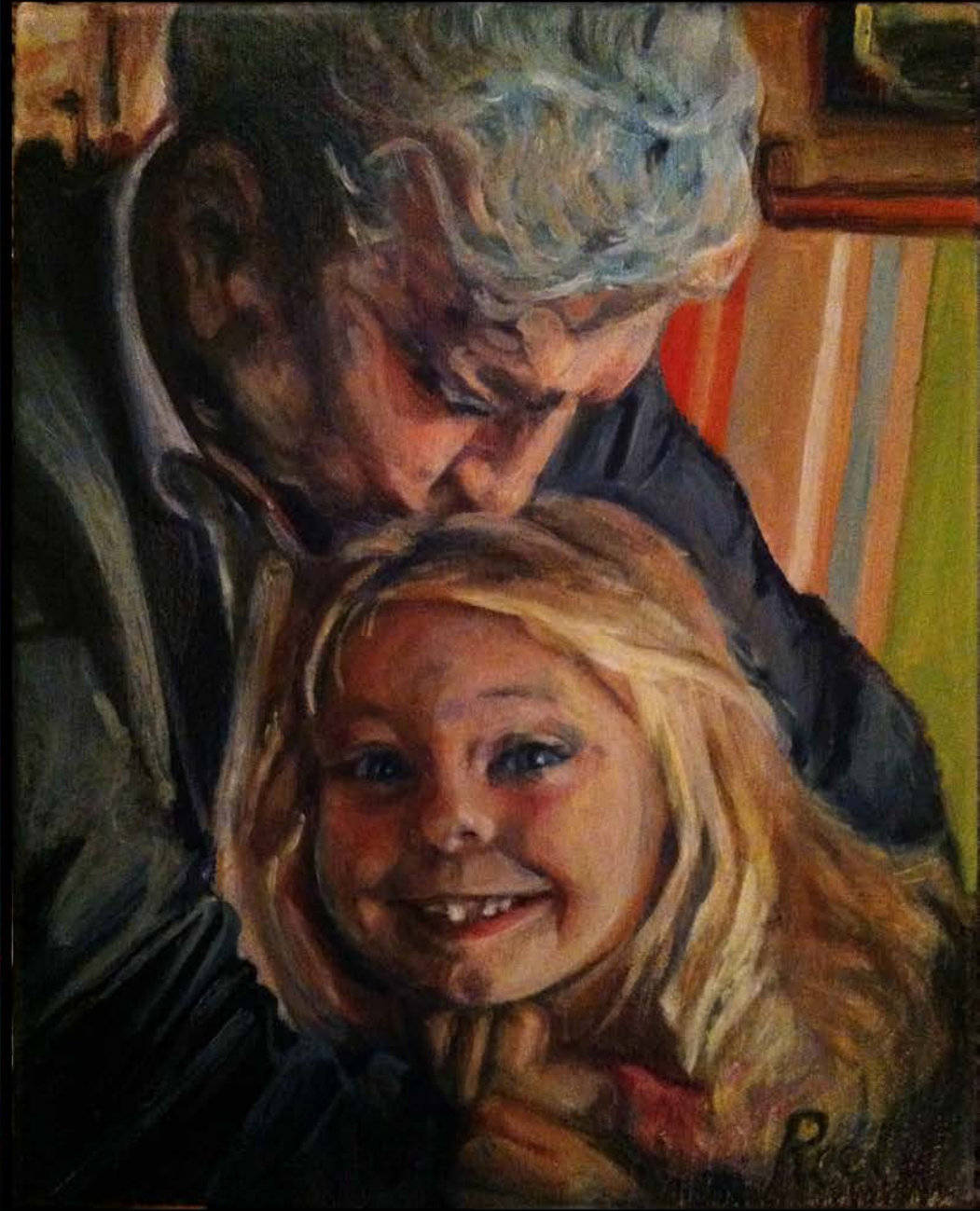




R
A
E





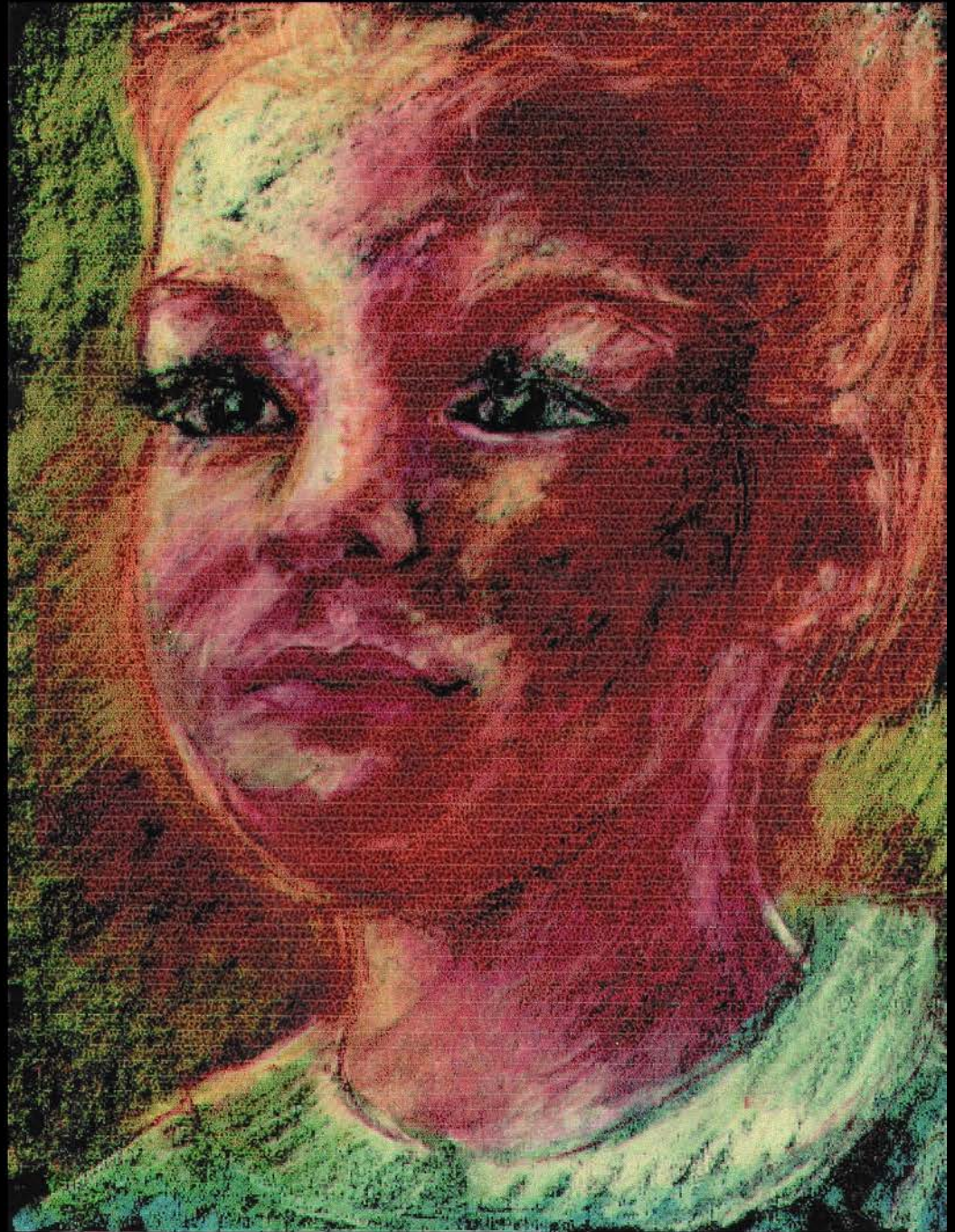


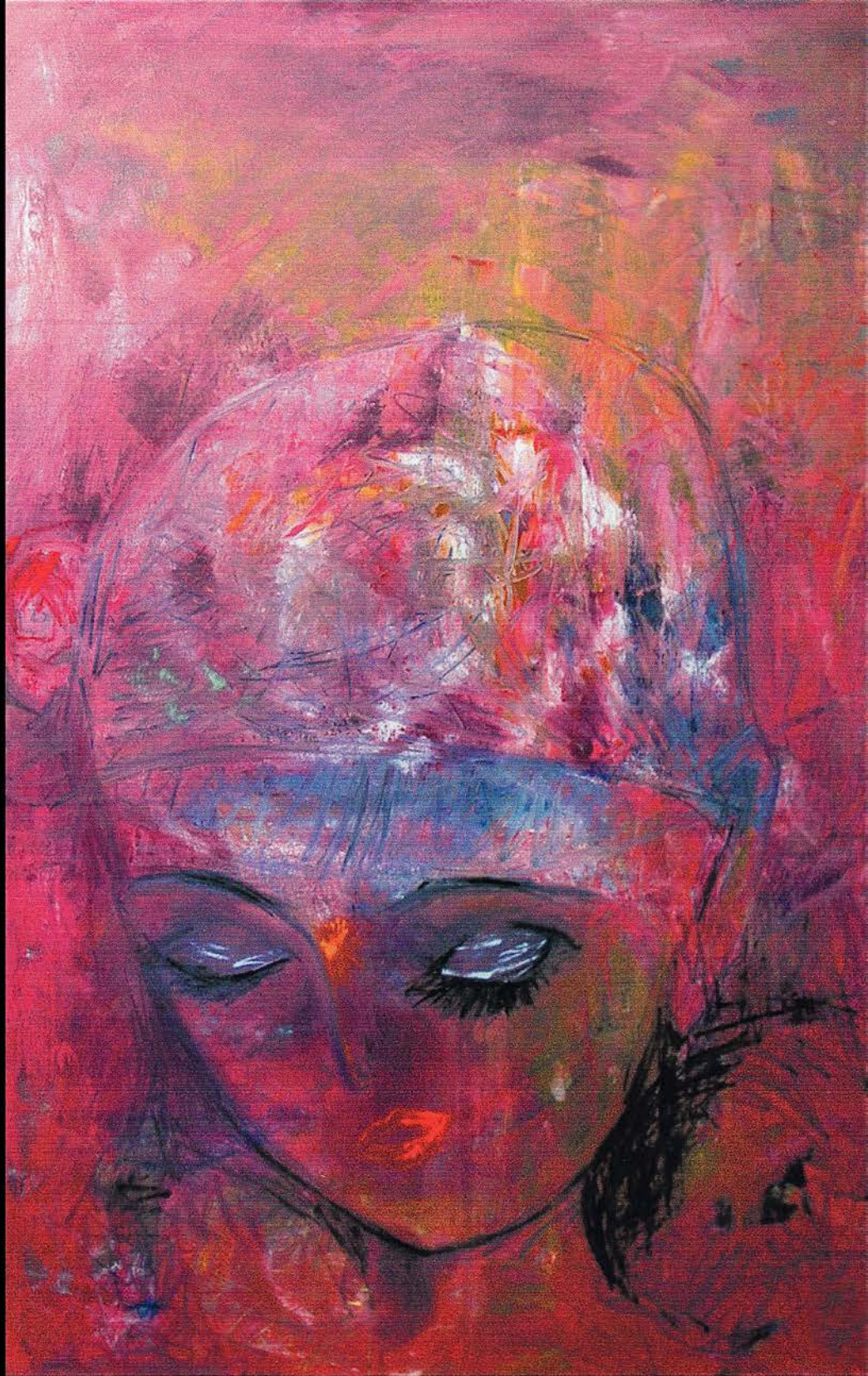
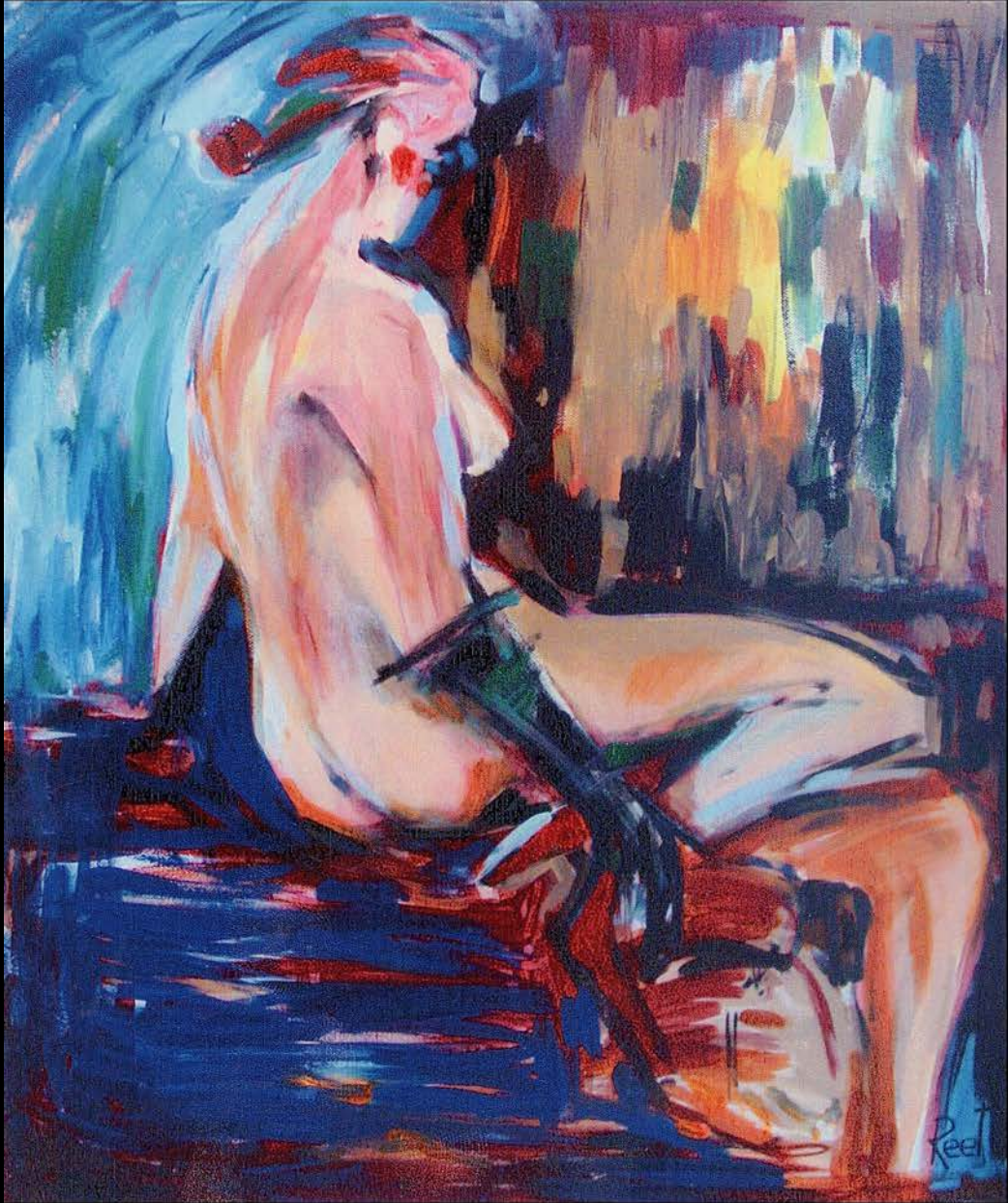


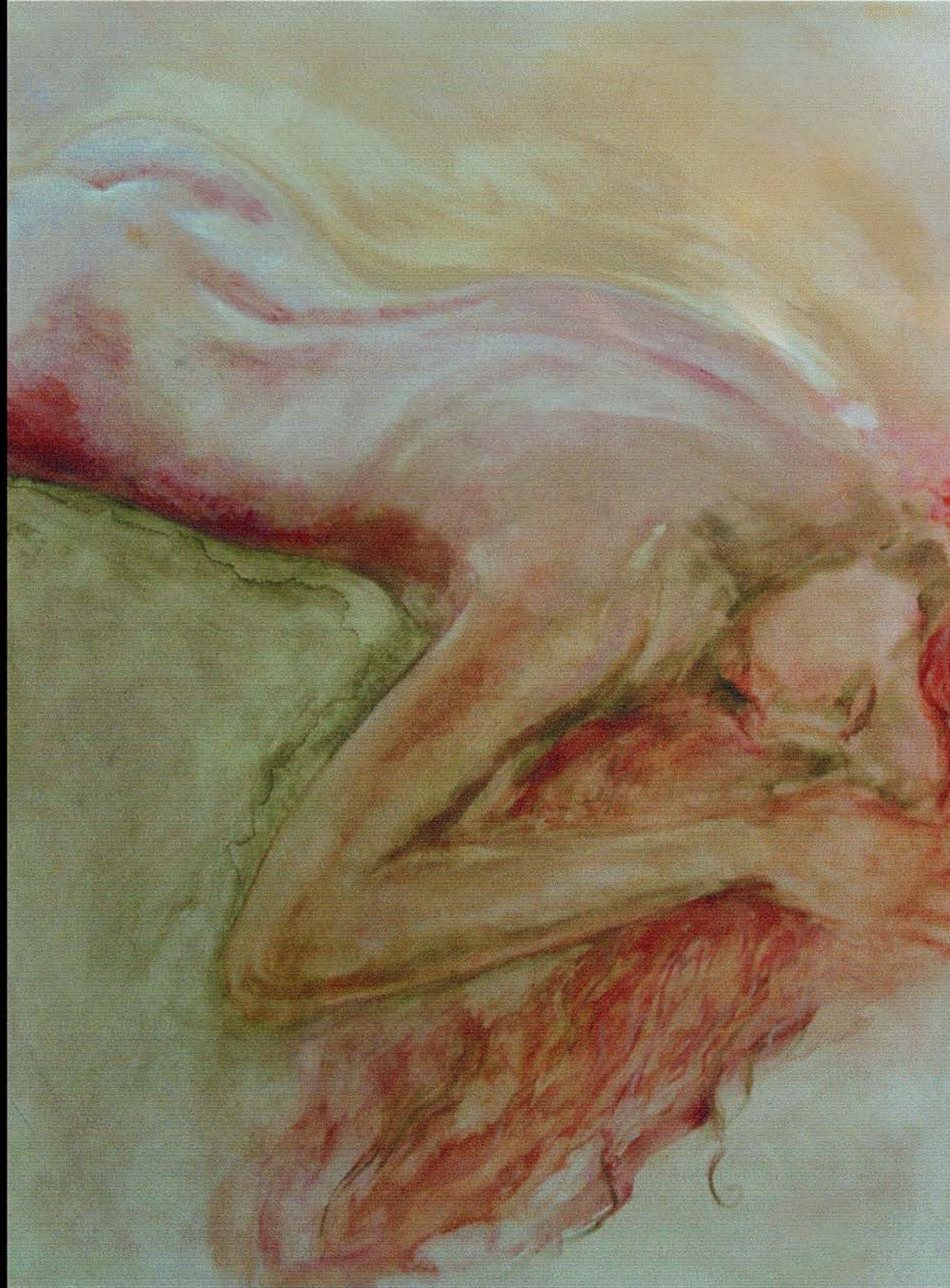


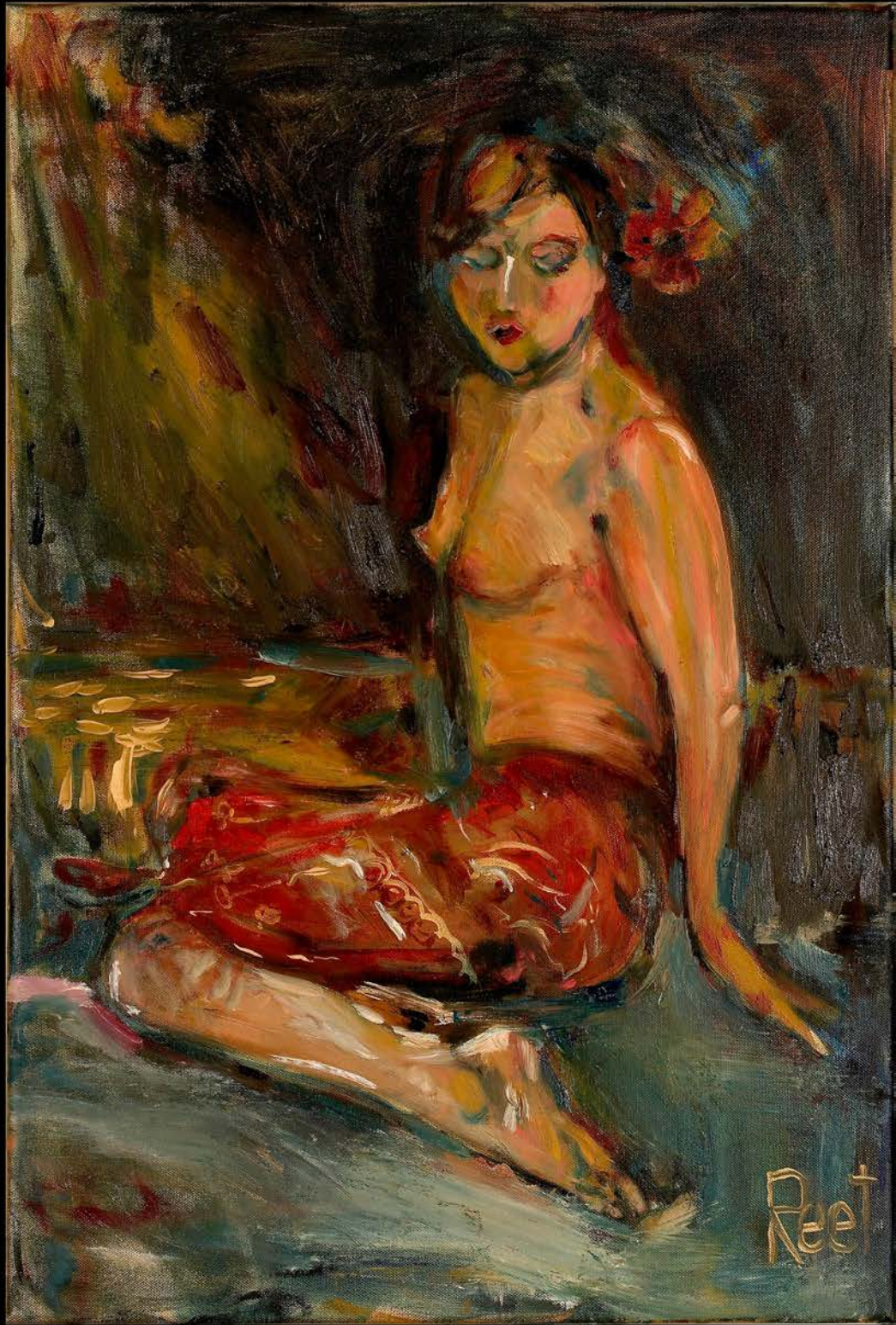
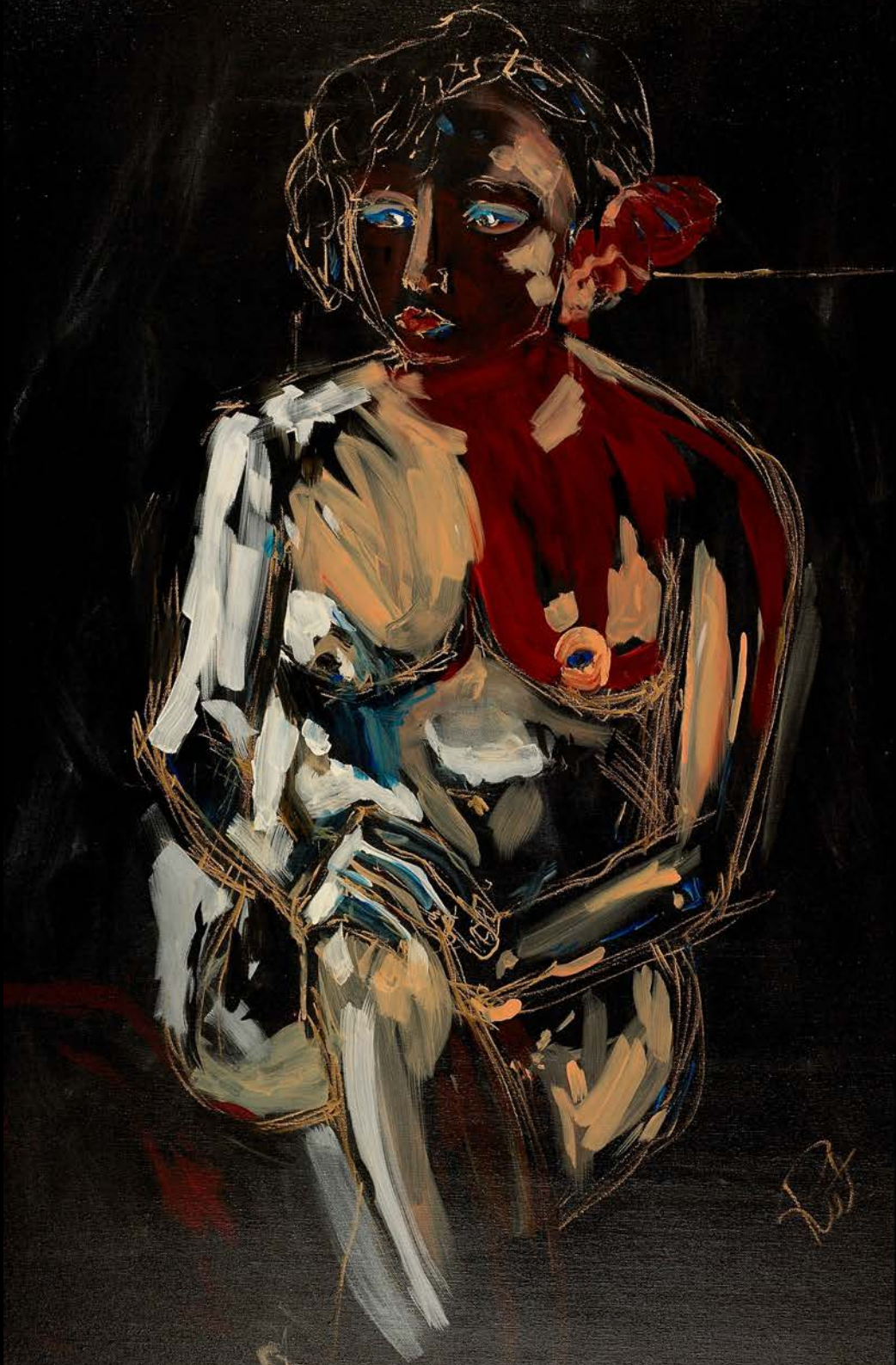


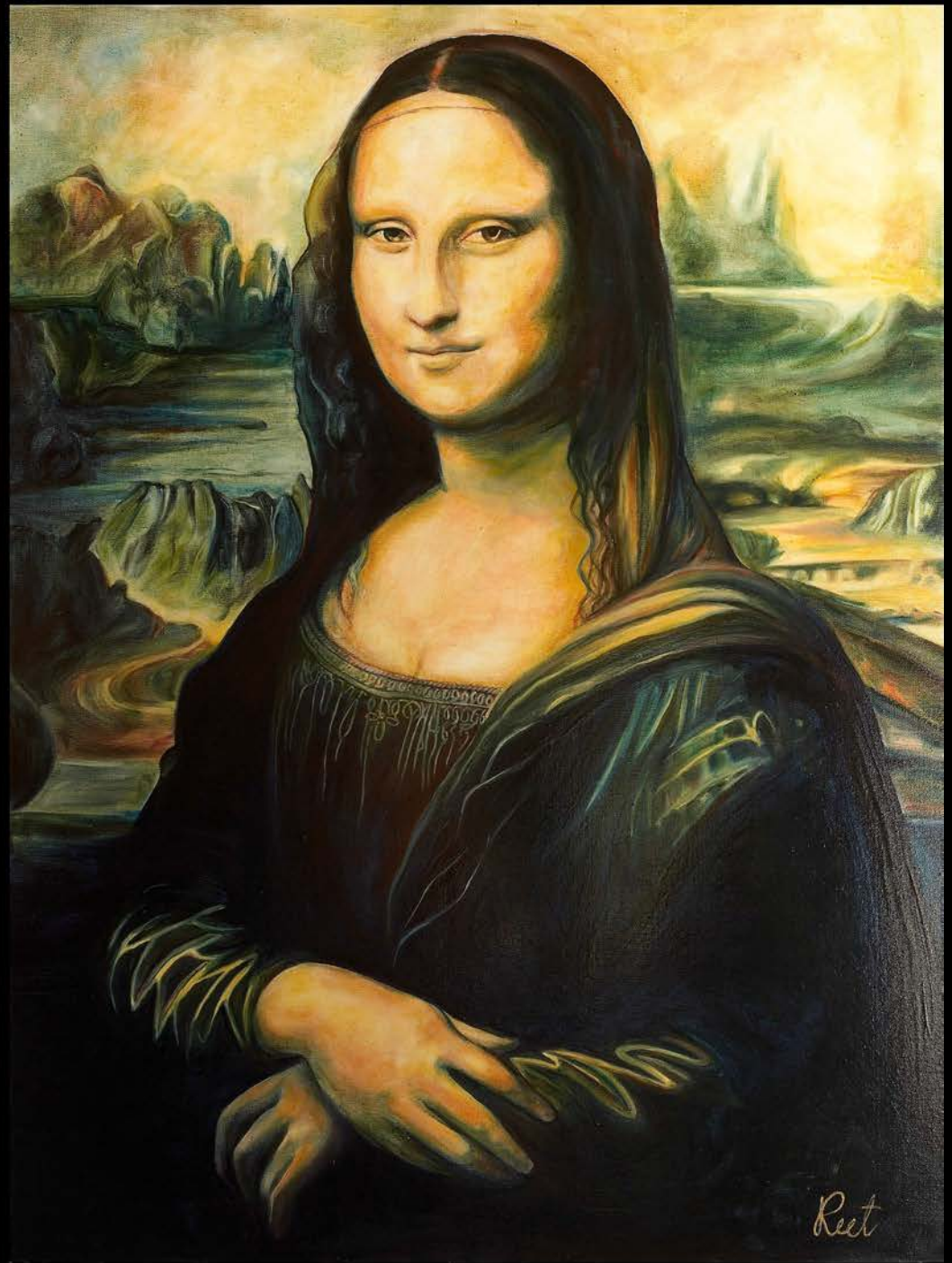


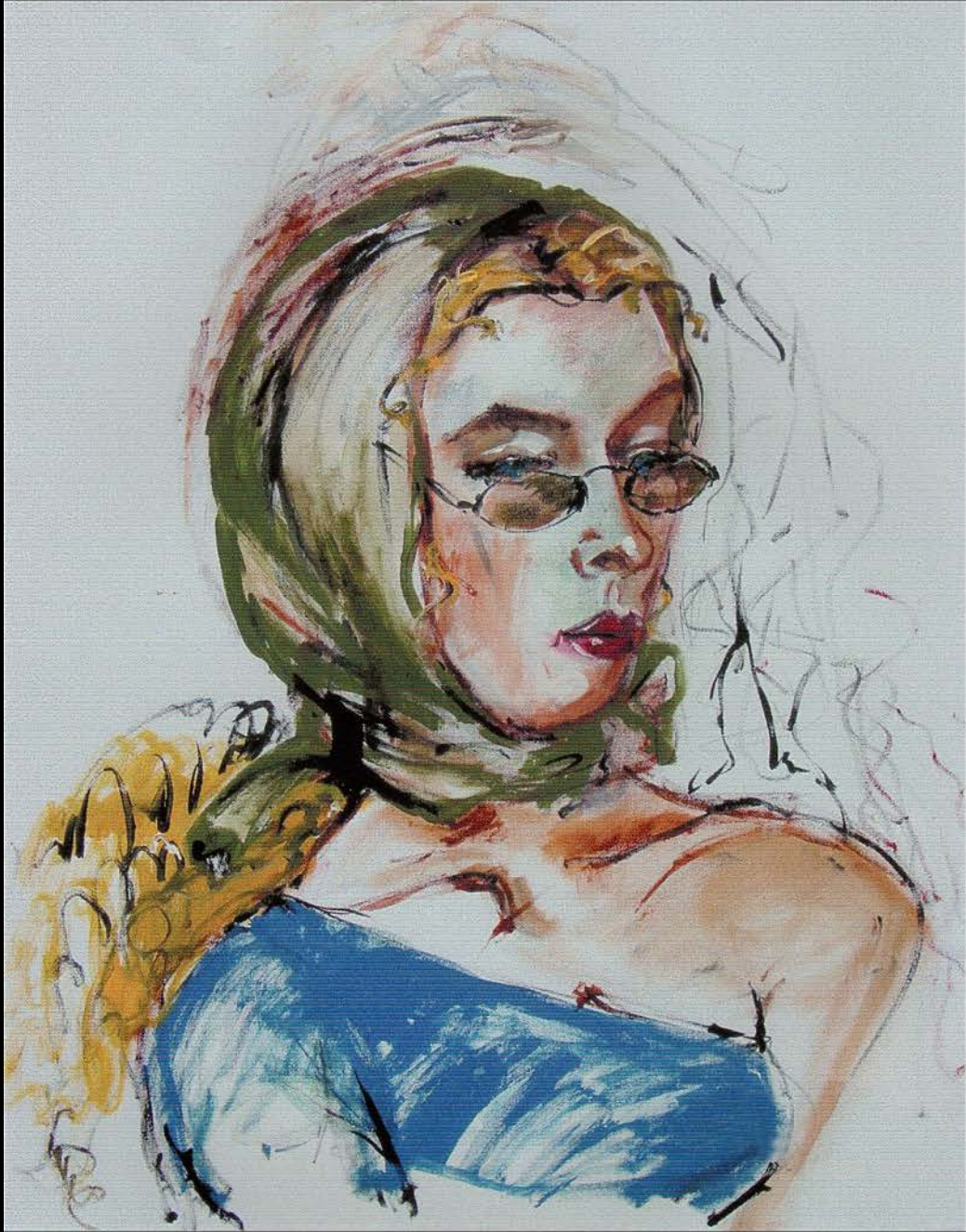
















Reel



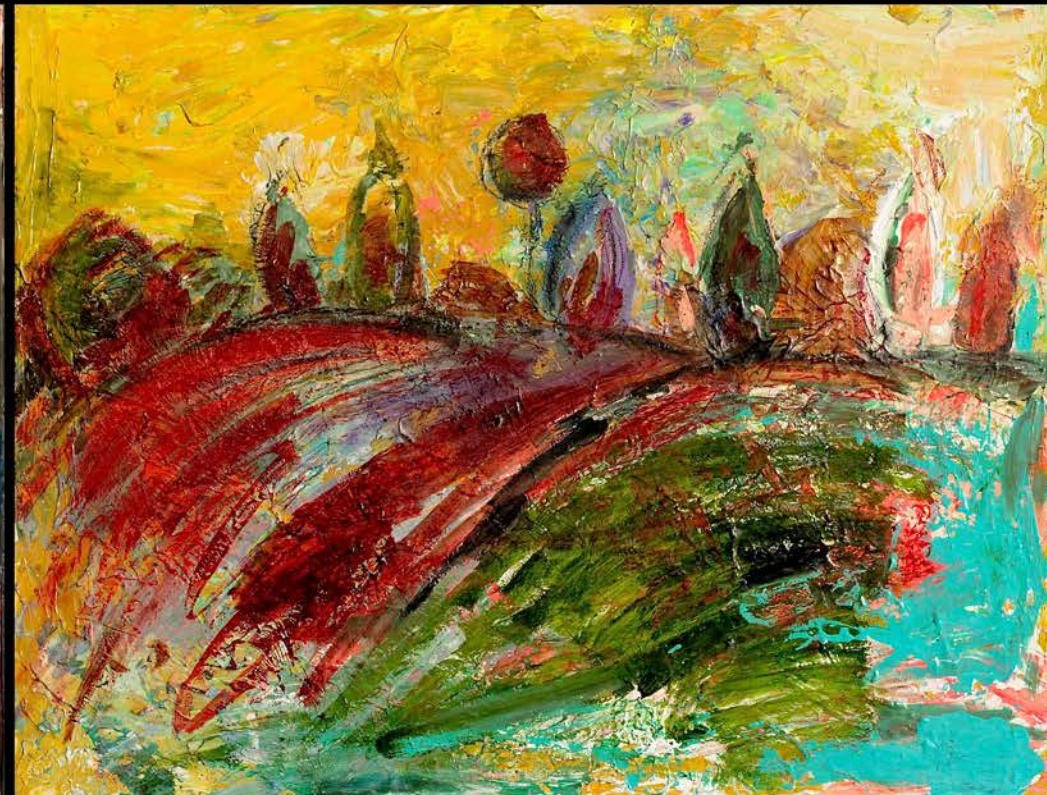




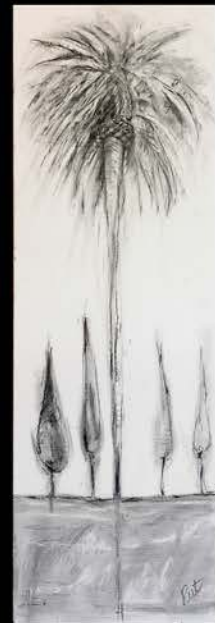










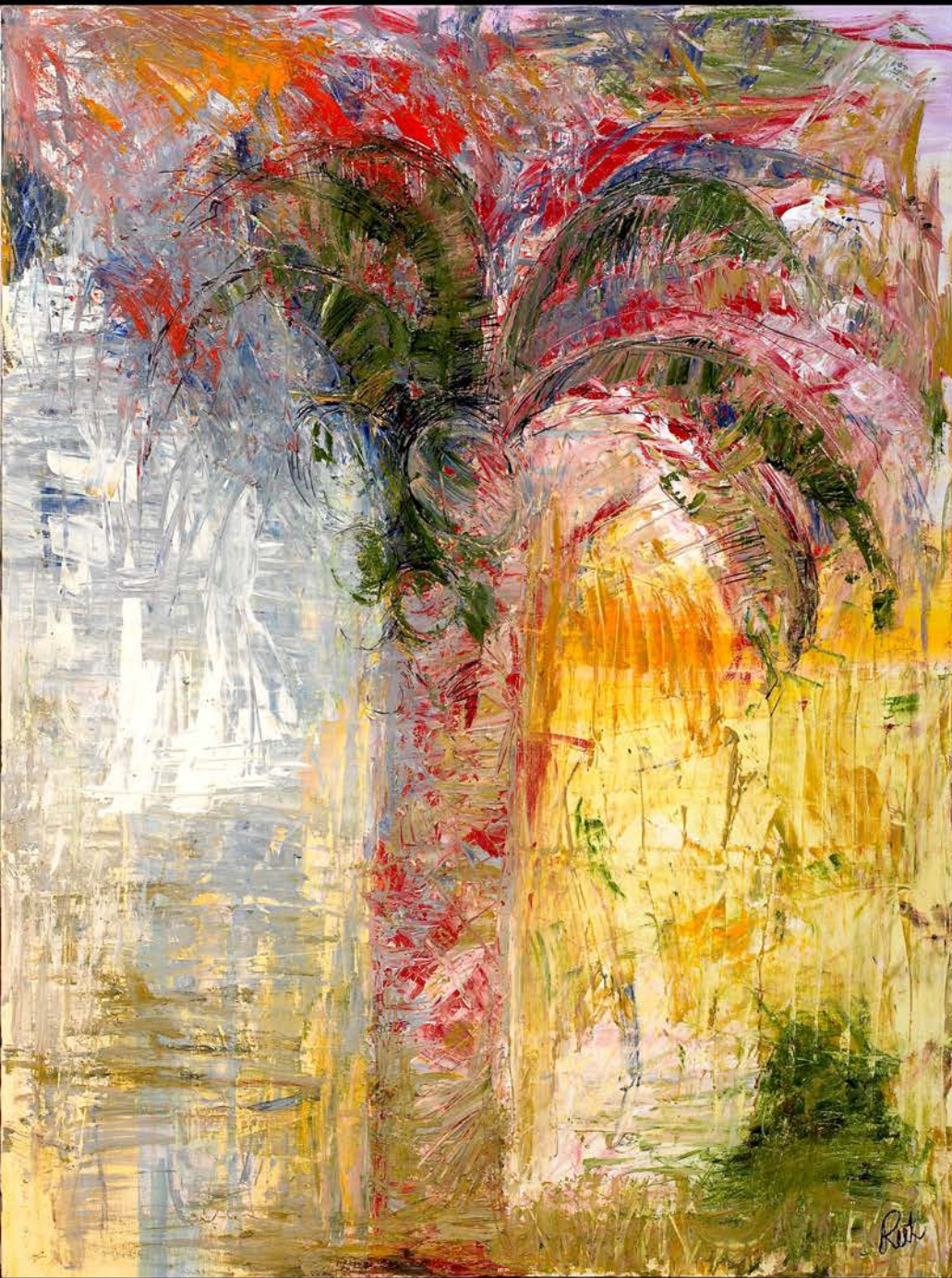




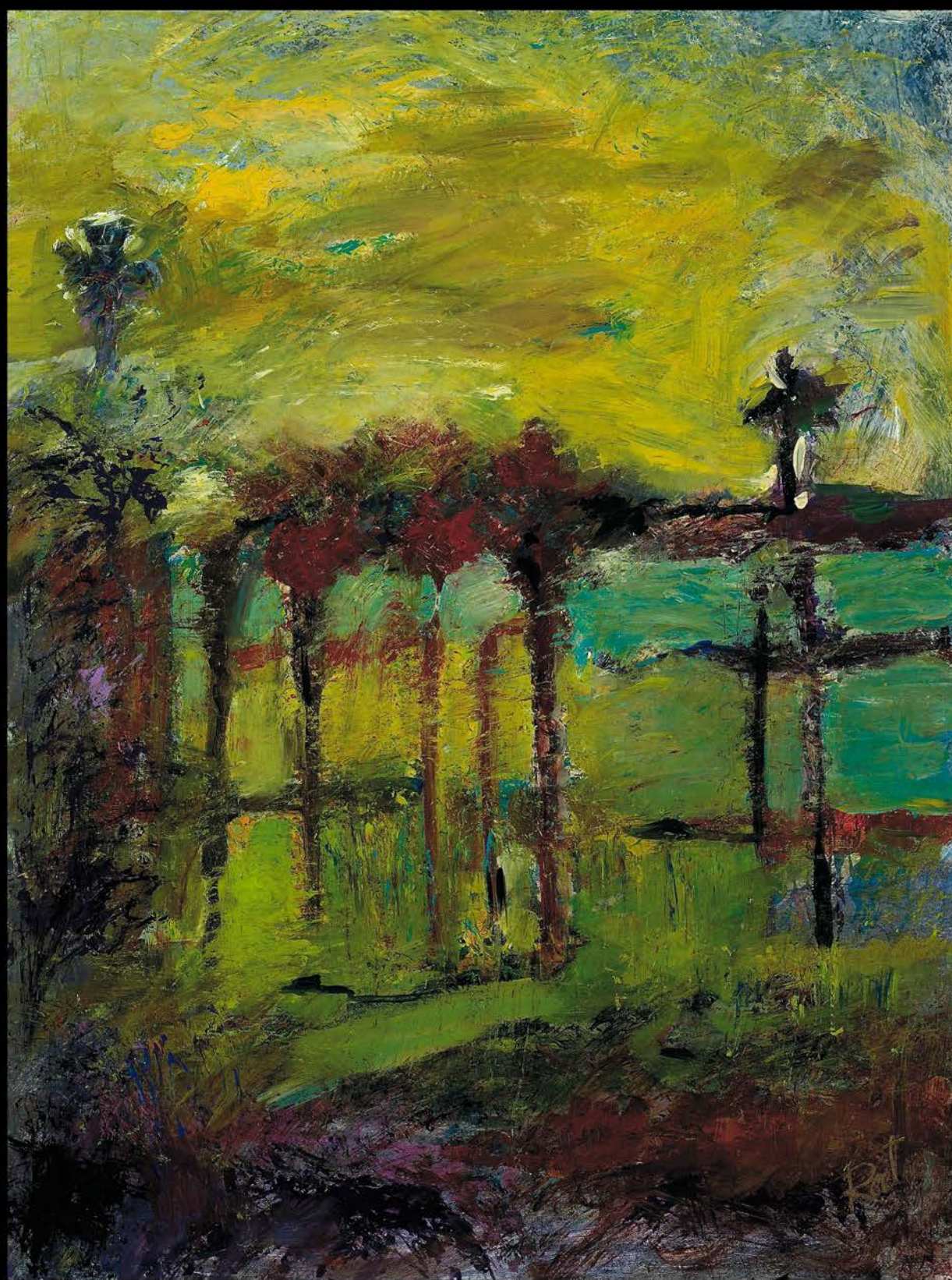
Ret ♡



Ret ♡

















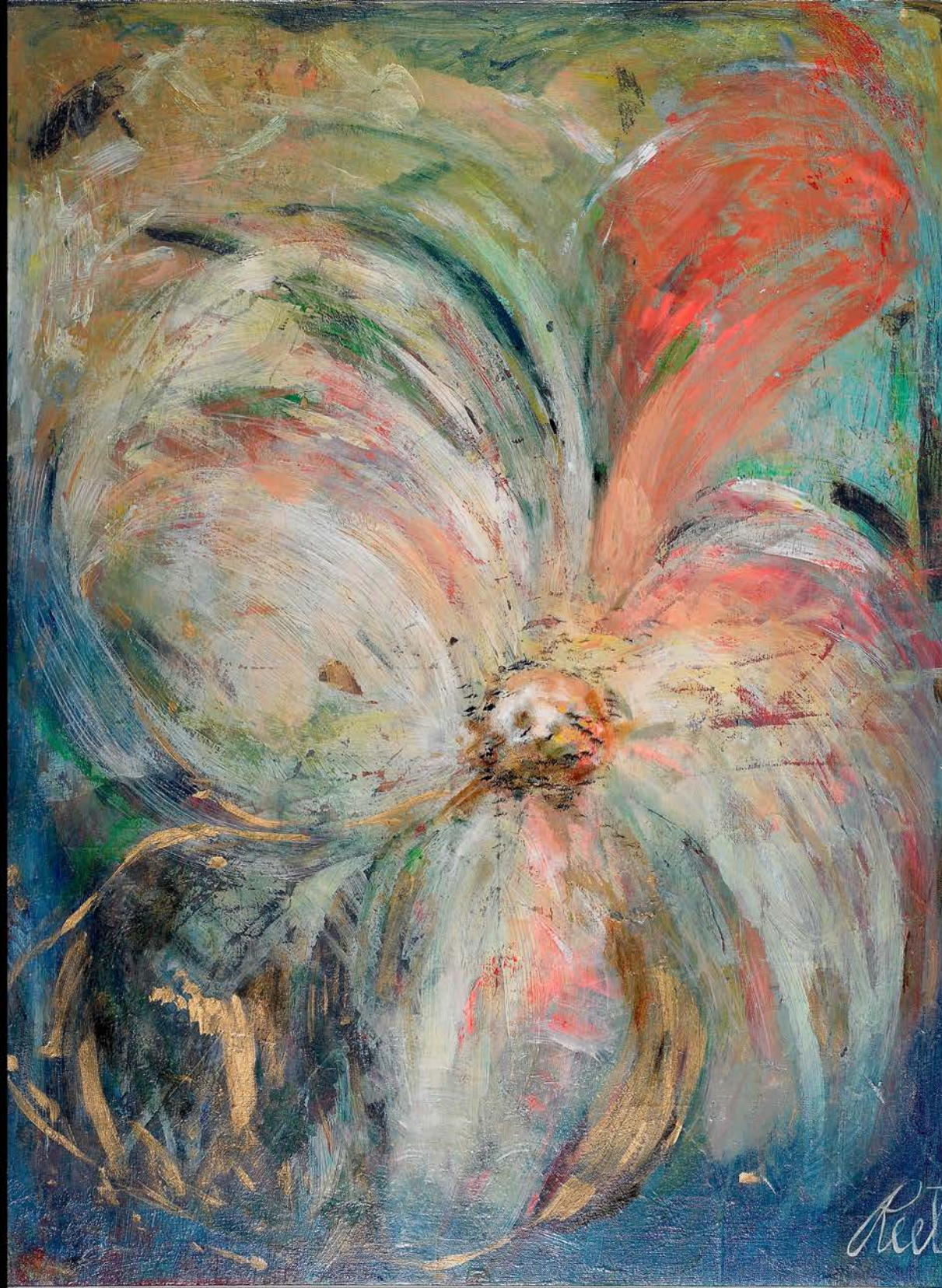
100











Reel